

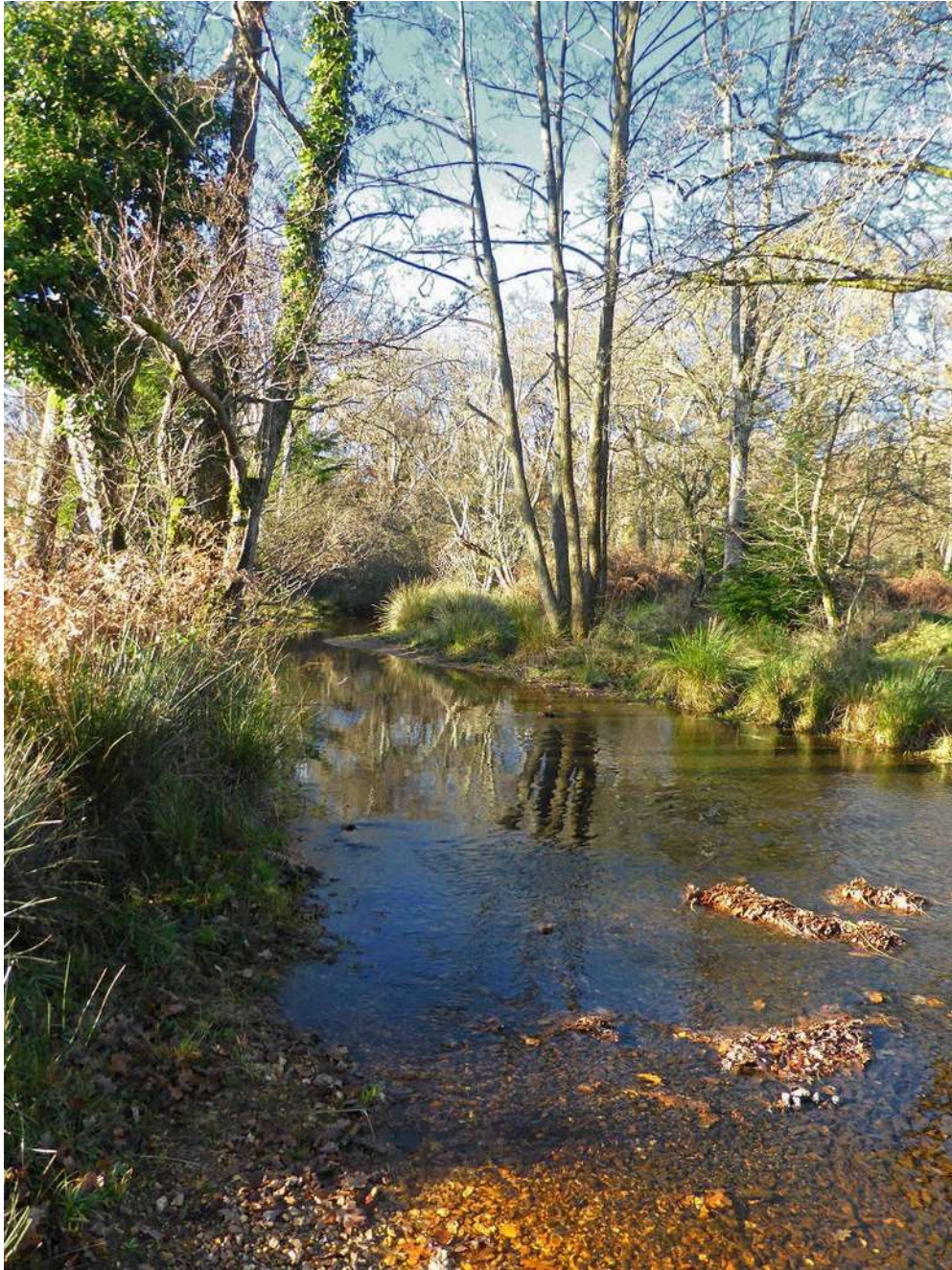


Ringwood Natural History Society Fletcher's Water and Blackwater Arboretum Walk

Date: 29th November 2017
 Walk Leaders: Pat and Derrick Holder
 Weather: Sunny
 Temperature: 4 degrees
 Attendees: 21

Rhinefield Ornamental Drive and nearby Blackwater Arboretum are on Rhinefield Road which runs from Brockenhurst towards the A35 Lyndhurst-Christchurch road, passing by Douglas Firs and Redwoods originally planted in 1859 to reach Blackwater car park. We began by walking the eastern side of the drive through Poundhill Inclosure and onto Fletcher's Thorns Inclosure. The stream which runs through this area is known as Fletcher's Water but it is a continuation of Black Water stream on the west side of the Drive and a tributary of the Lymington River. Our path led us onto Rhinefield Road passing the sharp bend at the entrance of Rhinefield House. Just afterwards turning westwards onto Rhinefield Sandy's Inclosure, this forestry plantation dates from 1809, but even then it was a re-inclosure. Mature examples of Oak, Ash, Sweet Chestnut and Beech are present, some of which may date from the original planting. We forded Blackwater stream and proceeded to Blackwater Arboretum which also has a sensory trail and where Hawfinches come into a communal roost, they perch on top of conifer trees before diving into dense cover provided by these trees. Unfortunately we were too early to witness this although they have been reported recently.

Birds	Fungi	Flowering Plants
Treecreeper	Small Stagshorn	Gorse
Blackbird	Butter Cap	Cross-leaved Heath
Common Buzzard	Sulphur Tuft	Creeping Buttercup
Redwing	Turkeytail	Herb Robert
Robin	Hoof Fungus	Bramble
Chaffinch	Resupinate Fungus sp.	
Song Thrush	Hairy Curtain Crust	
Great Tit	Birch Mazegill	
Dunnock		
	Liverworts	
	<i>Frullania Tamarisci</i> - Tamarisk Scalewort	



Fletcher's Water by Gerry Traves