



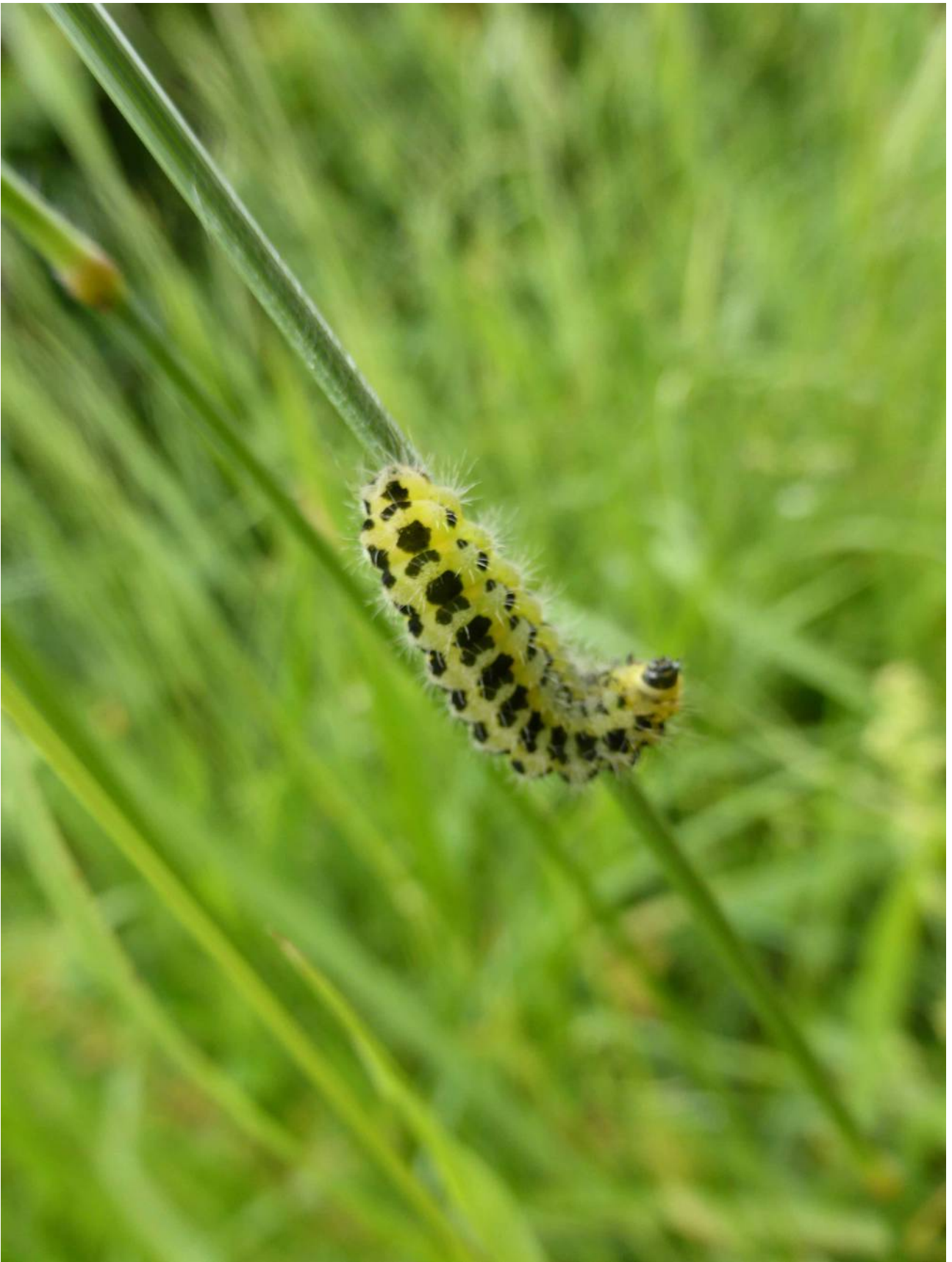
## Ringwood Natural History Society Worth Matravers Walk

Date: 8<sup>th</sup> June 2017  
 Walk Leaders: Pat Holder and Lyn Traves  
 Weather: Overcast and windy, heavy rain prior to walk  
 Temperature: 16 degrees  
 Attendees: 8

Worth Matravers is a village and civil parish, situated on the Purbeck cliffs west of Swanage, Dorset. It comprises of limestone cottages and farm houses and is built around a pond. The cliffs of Worth Matravers were the site of a Chain Home radar station during World War II, which was instrumental in the development of radar when the Telecommunications Research Establishment outstation shared the site from 1940 until 1942. Our walk took us to Winspit which is an old disused quarry on the coastal cliffs near Worth Matravers. In the eighteenth century the Purbeck stone from this quarry was highly prized and used in various prestigious buildings in London. Winspit was used as a stone quarry until 1940, when it was turned into a World War Two naval and air base. After the war the privately-owned caves were opened to the public, although some have since been closed due to safety issues and in order to protect the Mouse-eared and Greater Horseshoe bat populations however, some caverns are still open to the public. After having lunch at Winspit our walk took us along the South West Coast Path towards Seacombe where we had hoped to see Early Spider Orchids. Unfortunately due to a dry and early spring they had flowered and gone over. This trail was once used by Smugglers who under the cover of darkness would store their smuggled goods in the hidden caves and tunnels. There are steams running through both Winspit and Seacombe valleys which disappear into the limestone rocks before they reach the sea. Due to rain being forecast later in the day we returned to Worth Matravers by walking back up the steep Seacombe Valley where refreshments were had at the famous Square and Compass pub.

| Flowering Plants    | Flowering Plants cont. | Birds         | Insects                    |
|---------------------|------------------------|---------------|----------------------------|
| Elder               | Pineappleweed          | Herring Gull  | Yellow Shell Moth          |
| Daisy               | Hedge Mustard          | Blackbird     | Six-spot Burnet Moth Larva |
| Dog Rose            | Meadow Vetchling       | Starling      | Garden Tiger Moth Larva    |
| Charlock            | Common Vetch           | House Sparrow |                            |
| Cow Parsley         | Salad Burnet           | Robin         |                            |
| Birdsfoot Trefoil   | Agrimony               | Goldfinch     | <b>Mammals</b>             |
| Catsear             | Hedge Bedstraw         | Carrion Crow  | Rabbit                     |
| White Clover        | Chalk Milkwort         | Wren          |                            |
| Green Alkanet       | Black Meddick          | Bullfinch     |                            |
| Hedge Woundwort     | Herb Bennet            | Yellowhammer  |                            |
| Nipplewort          | Field Forgetmenot      | Dunnock       |                            |
| Herb Robert         | Hairy Tare             | Whitethroat   |                            |
| Smooth Sow-thistle  | Ivy Broomrape          | Song Thrush   |                            |
| Rough Sow-thistle   | Kidney Vetch           | Linnet        |                            |
| Germander Speedwell | Field Bindweed         | Chaffinch     |                            |
| Hogweed             | Sea Cabbage            | Jackdaw       |                            |
| Ribwort Plantain    | Wild Privet            | Fulmar        |                            |
| Wild Clary          | Eyebright              | Rock Pipit    |                            |
| Cinquefoil          | Wild Thyme             | Skylark       |                            |
| Lady's Bedstraw     | Pale Flax              | Meadow Pipit  |                            |
| Tree Mallow         | Horseshoe Vetch        | Blackcap      |                            |

|                                  |                          |         |  |
|----------------------------------|--------------------------|---------|--|
| Cleavers                         | Hop Trefoil              | Swallow |  |
| Valerian (red,white&pink)        | Yarrow                   |         |  |
| Yellow Iris                      | Yellow Vetchling         |         |  |
| White Water-lily                 | Viper's Bugloss          |         |  |
| Fool's Watercress                | Wild Carrot              |         |  |
| Stinking Iris                    | Buckshorn Plantain       |         |  |
| Garden Catmint                   | Scarlet Pimpernel        |         |  |
| Creeping Buttercup               | Crosswort                |         |  |
| White Dead-nettle                | Houndstongue             |         |  |
| Common Sorrel                    | Watercress               |         |  |
| Bramble                          | Field Speedwell          |         |  |
| Bush Vetch                       | Musk Thistle             |         |  |
| Bittersweet aka Woody Nightshade | Field Madder             |         |  |
| Cut-leaved Cranesbill            | Lords and Ladies Berries |         |  |



*Six-spot Burnet Moth Caterpillar Worth Matravers by Lyn Traves*



*Worth Matravers Duckpond by Lyn Traves*